



**MEDALLUS  
PLUS-50**

An Inovashare Health Plan

**For Large Employers (50+ Employees) ACA compliant**

**Included Benefits**

**Minimum Essential Coverage “MEC” Plan**

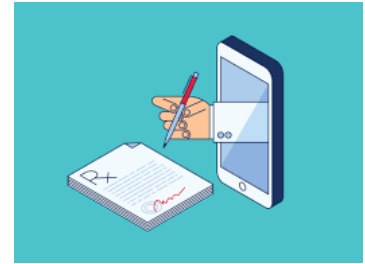
Covered Preventive Health Benefits / Wellness check-ups

- Counseling
- Immunizations: birth to age 18
- Mammograms: every year for women over 40
- Colonoscopies: adults starting at age 50, every 5 years
- Much more



Telemedicine-Doctor available to you by phone or video chat for common illnesses.

- 24/7/365 Access
- Board Certified Providers
- Prescribe medications to a local pharmacy
- Behavioral Health



**Medallus Medical Membership**

- \$10 co-pay per visit
- On-site x-ray and lab
- Locations throughout Utah

**Urgent Care**

- Acute Illness
- Acute Injuries

**Primary Care**

- Chronic Care
- Wellness Visit
- Common Procedures

**Accidental Injury Coverage--pays cash to you** for injuries resulting in; emergency room visits, Dr. office visits, hospitalization, physical therapy, fractures, dislocations, cuts, injuries that require surgery, accidental death and dismemberment.



**Adult Claim Example 1 – Broken Finger**

Benefit	
Fracture (finger)	\$250
Emergency room services	\$500
Physician visit (2 visits)	\$100
Total	\$850

**Adult Claim Example 2 – Broken Leg**

Benefit	
Fracture (leg)	\$2,000
Emergency room services	\$500
Ambulance (ground)	\$250
Hospital confinement (1 day)	\$500
Medical appliances (crutches)	\$125
Physician visit / Physical therapy (2 visits)	\$200
Total	\$3,575



## Dental/ Vision/ Prescription Discounts

### Dental Services

The Dentist Direct network has over 200,000 dentists you can access. This component is a discount plan. There are no extra monthly premiums to pay and no deductibles to satisfy.

**Preventive.** Routine exams: cleanings, fluoride, and x-rays. Fee reduction of 20% to 60%. No waiting period.

**Basic.** Fillings, oral surgery, endodontics. Fee reduction of 20% to 60%. No waiting period.

**Major.** Crowns, bridges, dentures, and periodontics. Fee reduction of 20% to 60%. No waiting period.

**Deductible.** None.

**Orthodontia.** Children and adults. Fee reduction of approx. 20%.

**Specialists.** Fee reduction of 10% to 30% (or more).

**Maximum Benefit.** Unlimited

Procedure	Typical Price	Discount Price	Savings	Discount %
White Filling	\$167	\$74	\$93	56%
Root Canal	\$934	\$505	\$459	\$48

### Vision Services

71% of the working population requires some form of vision correction.

40,000+ participating providers nationwide

15% to 20% Discounts

### Rx Services

Prescription Drug Discounts – Up to 90% Savings <sup>1</sup>				
Medication	Typical Price	Discount Price	Savings	Discount %
Crestor	\$194.80	\$19.48	\$175.32	90%
Lexapro	\$116.60	\$23.32	\$93.28	80%
Nexium	\$236.27	\$61.43	\$174.84	74%